



**EU PREPAREDNESS AROUND RECEPTION
AND RETURN OF MIGRANTS**

EASO

**05-06 OCTOBER 2021
LJUBLJANA**

Preparedness around reception and return of migrants

EASO's Reception strategy

- Building blocks
- Modular approach, based on scenario's

Contingency planning

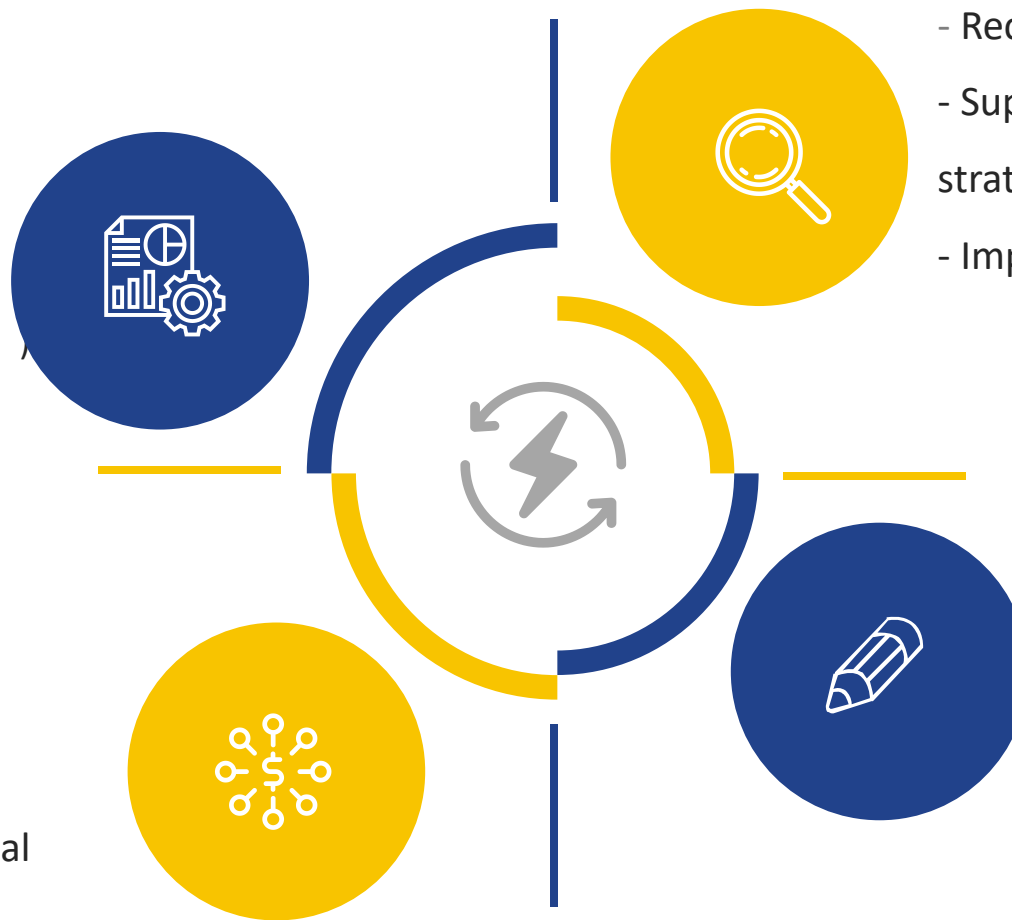
- Organizational level
- National level
- Regional level, including in the external dimension

Increased Operational support

- Reception measures
- Support in (re-)building national reception strategy's
- Implementing activities

Development of Practical Tools

1. EASO Tool for Quality Assessment of Reception Conditions
2. EASO Toolkit for information provision in the context of reception
3. Vulnerability toolkit
4. "hardware" and "software" in Reception





Reception pathway and the “building block” approach

- ✓ The “**building block**” approach follows the logic of the reception process from intake to outtake and focus on different aspects of both managing an overall **reception system** and practical aspects of **running** a reception facility

Wireframes Reception pathway



Legal reference

Description of procedural steps

Description of procedural steps

Operational tips / methodological guidance on how to convey the content

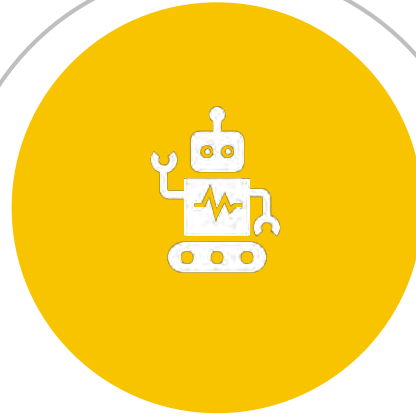
Link to the library of good practices

A Scenario-based Approach to EASO's operational intervention on reception



Scenario 1

Capacity Building for
reception authorities
and staff



Scenario 2

Technical and
operational support



Scenario 3

Emergency direct
operational support

Practical guide on contingency planning

A. Introduction

B. An integral approach to contingency planning

C. Monitoring and evaluation

D. Risk analysis

E. Management and decision-making process

F. Information management and communication

G. External Coordination

H. Budget management and financial resources

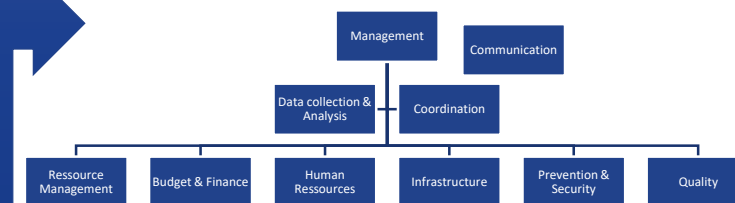
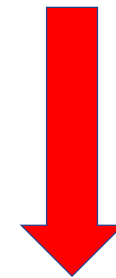
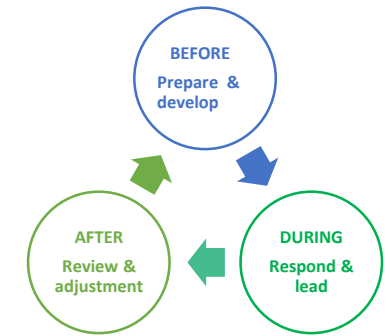
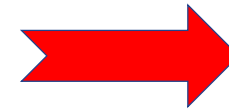
I. Housing capacity

J. Resources management

K. Human Resources

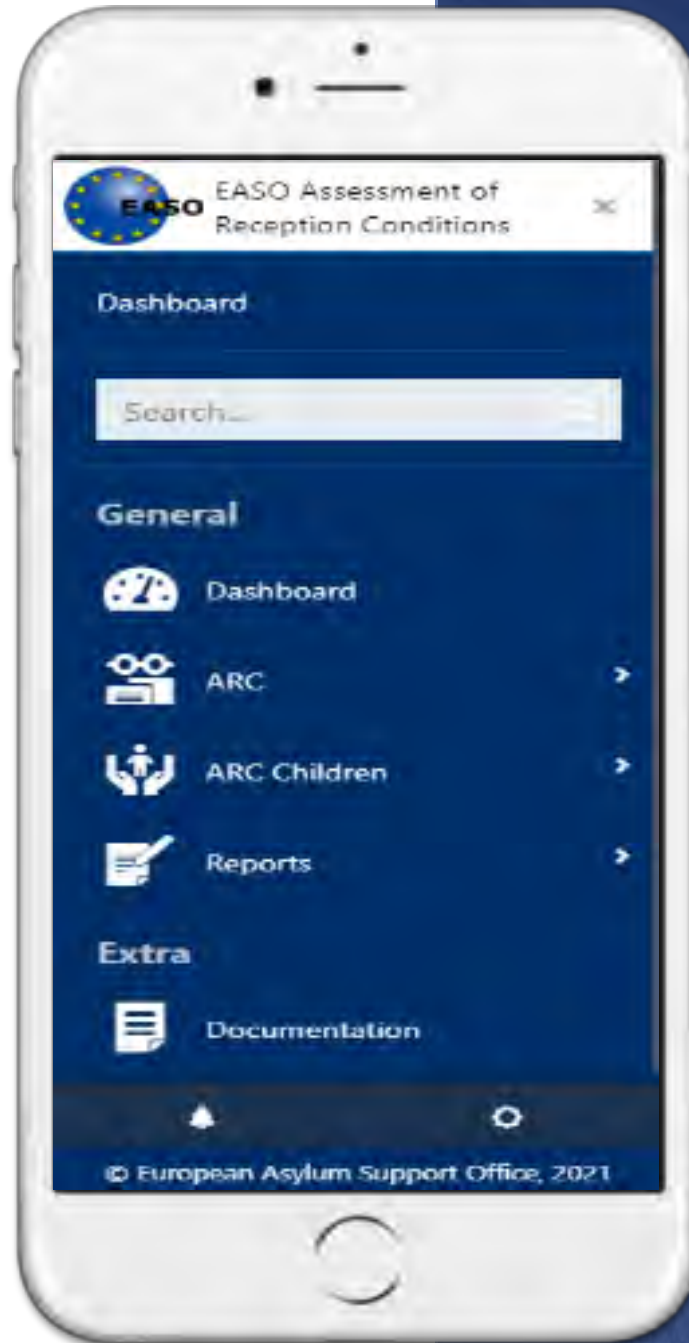
L. Managing the provision of reception conditions

M. Security/prevention and safety



Assessment of reception conditions: ARC

Next steps



National language versions



Testing in the field



Adoption by national authorities.

Deliverables

Modular Reception Capacity Toolkit

Standardised
reception workflow
and functionalities:
SOFTWARE



Standardised reception
infrastructure
blueprints and technical
specifications:
HARDWARE

Hardware Working Group



Site evaluation

template

suitability of
built/unbuilt sites for
reception



Calculation tool

What is needed based on
X number of residents /
how many residents can
be accommodated
according to conditions.



Standard container

/ housing unit

used for procurement



Procurement

template

Principles of a
reception centre / what
needs to be delivered
by a contractor.



Physical

organization of registration process

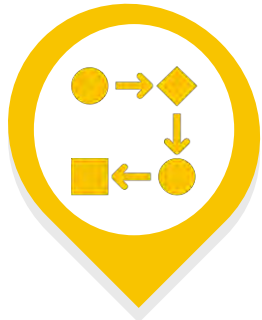
Software Working Group



Functionalities

Full list and prioritization

Modules for
downscaling/upscaling



Flowchart

General principles

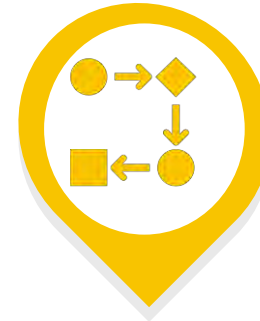
Skeleton for a proper
modus operandi

Necessary information
to collected from the
applicant as per
flowchart



Necessary reception staff/profiles

Staff calculations



Flowchart for information provision during arrival stage



Review of existing EASO Guidance documents

e.g. adding
operational tips,
further developing the
standards



Preparedness around reception also means:

Arrival centres , efficient processing, multi- stakeholders approach

(pre-) departure centres as part of large-scale reception facilities → design

Effectiveness and efficiency of asylum procedures increase the pressure on fast scaling down

Capacity management: monitoring in & outflow, processing time & duration of stay

Discrepancy between EU+ states

More reflection on closed, semi-closed, controlled centres versus open accommodation



THANK YOU

